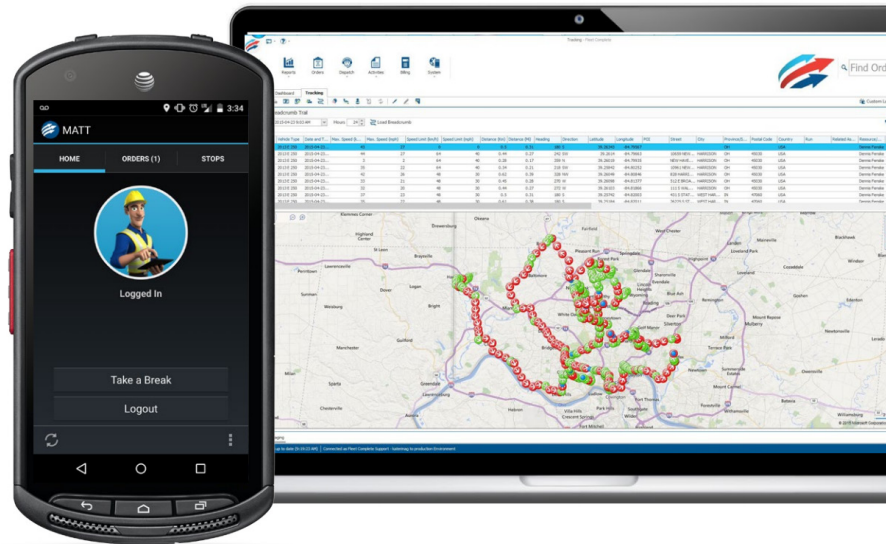


Fleet Complete Dispatch

Whether you provide same day on-demand services, distribution, scheduled deliveries, dedicated fleet services or all of the above, AT&T Fleet Complete Dispatch from Metropark can help you effectively manage it all.



Smart Routing

With our leading-edge GPS technology, you can establish the most optimal route to a destination with the ability to make real-time adjustments as new orders come in. You gain instant visibility into any arising issues for each individual route/order, together with the actions taken to resolve them. You can even accommodate seasonal work with automatic start and end dates for routes operating by season.

Automate Complex Operations

Save time by automating the creation of multi-leg routes and assigning orders to drivers with customized route templates. Define specific dispatch zone conditions and driver qualifications, needed to automatically connect the right person with the job at hand.

Reporting

Get optimal insight into your performance management and run on-demand or scheduled reports.

Resource Management

Upload driver's certifications and licenses, including a notification upon expiry, to tailor your employee's competencies to customer needs. Streamline your dispatch process to deploy the most qualified driver for the pending job.

Order Management

This feature will allow you to competently manage orders and deliveries with classifications, profiling and integrated support for barcoded packages and signature captures.

Multi-Leg Route Customization

Design organized route support with options to specify driver service type per leg and separate settlement amounts per leg.

